



External Setpoint Control CAD-POT

Description:

Single multi-purpose versatile control allows the adjustment of DIGISTAT'S Set-Point from a remote location. Includes BS5733 type mountings.

Features:

- One adjuster - three applications (all panel labels supplied)
- +/- 4°C Adjustment
- -5°C to +45°C Adjustment
- 25°C to 95°C Adjustment
- Easy single 10mm mounting hole
- BS5733 standard type mounting faceplate included



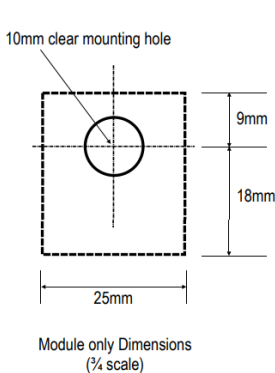
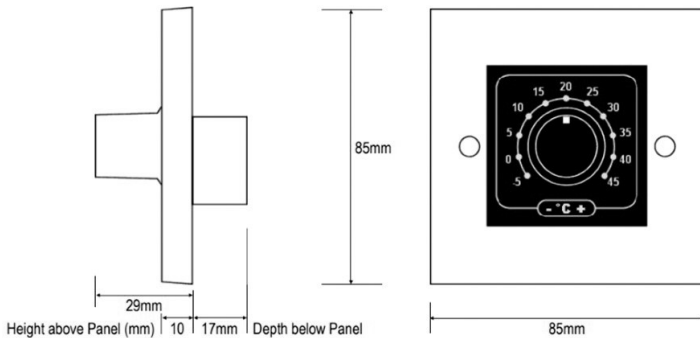
Technical Specification:

Displayed Temp Range: -4°C to +4°C
-5°C to +45°C
25°C to 95°C

Mounting: 10mm hole
BS faceplate
IP00

Enclosure: IP00

Dimensions:



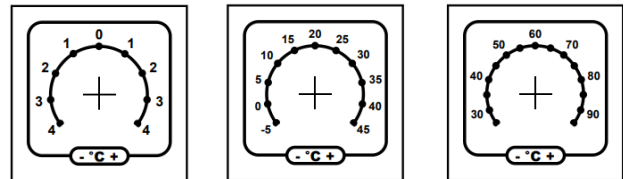
Depth behind panel of the module itself is 21mm max.

The Bush length is 8mm of which 7mm is threaded. A securing lock washer and nut is provided.

The control shaft is supplied uncut at it's full length of 32mm to cater for all possible mounting options. Cut the shaft to a length of 14mm if mounting directly onto a panel or the BS faceplate supplied.

Installation:

1. Prior to mounting, if required, trim the CAD-POT's shaft to the desired length (Engineering Tip - if cutting the shaft, use a pencil sharpener to deburr the end and leave a professional chamfered finish). Then mount into the predrilled 10mm mounting hole. Secure with the lock washer and nut provided. Do not overtighten or you will strip the thread or otherwise damage the plastic bush.
2. Affix one of the three self-adhesive labels provided onto your control panel (depending on your required set-point application). If you select either the -5/+45°C or the 25/+95°C label, then ensure your DIGISTAT's set-up is configured for the appropriate External Pot range. Connect the CAD-POT to the appropriate terminals on the DIGISTAT.
3. For accuracy, your selected scale must now be CALIBRATED against the DIGISTAT's settings. Calibration is a necessity because mechanical errors and play in the manufacturing of rotary controls commonly give tolerances as high as 20%. With the Set-Point displayed on the DIGISTAT's control panel, rotate the CAD-POT's shaft until the scale mid-way reading is shown... i.e. adjust for set-point zero deviation if using the +/-4°C Pot scale, adjust for 20°C if using the -5/+45°C External Pot scale, or adjust for 60°C if using the +25/+95°C External Pot scale. Slide on the control Knob and affix firmly with the knobs grub screw so that the pointer indicates the current setting as displayed on the DIGISTAT. Calibration is now complete. Adjust the pointer to the desired setting.



Order Code:

CAD-POT External Setpoint Control

EC Products Limited

EC House, Amberley Way, Hounslow,
Middlesex. TW4 6BH. United Kingdom
Tel:+44 (0)20 8569 4100 Fax: +44 (0)20 8569 4111