



Ceiling Occupancy Detector

230 Volt VFC

EBDSPIR-VFC

Description:

The EBDSPIR series of presence detector switches are designed to provide automatic control of lighting, heating or ventilation loads. They detect movement using a PIR sensor and turn the load on. When an area is no longer occupied the load will switch off after an adjustable time out period.

An adjustable internal light sensor provides additional energy saving in lighting applications. When an area is occupied lighting is only switched on when the level of natural light is below a preset level.

When the unit is first powered up the PIR sensor will always detect immediately regardless of whether the room is occupied.



Technical Specification:

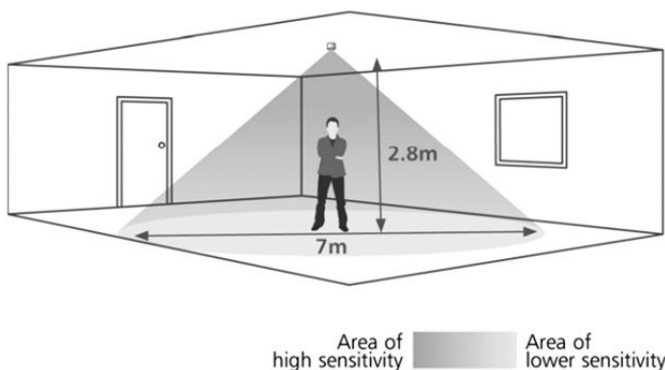


Supply Voltage:	230Vac 50Hz
Time Out Period:	Adjustable 10s to 30m
Light Level:	Light to dark
Terminal Capacity:	2.5mm ²
Material:	Flame retardant ABS
Type:	Class 2
Temperature:	-10°C to 35°C
Conformity:	EMC-89/336/EEC LVD-73/23/EEC

Load...

6 Amp resistive load
2 Amp inductive load

Detection Pattern:



Order Codes:

EBDSPIR-VFC Ceiling Occupancy Detector - 230 Volt VFC

Fault Finding:

Load does not come on:

Check to see if the live supply to the circuit is good. Strap across the L and LIVE OUT terminal to turn the load on. If the supply and wiring are good, check the LUX level setting. Increase the LUX level setting to allow the controller to turn on at higher ambient natural light level. If the detection range is smaller than expected, check the diagram above. Rotating the sensor slightly may improve the range.

Lights do not go off:

Ensure that the area is left unoccupied for longer than the selected timer setting. Make sure that the sensor is not adjacent to circulating air, heaters or lamps.

Installation:

- The detector should be sited so that the occupants of the room fall inside the detection pattern shown overleaf, at a recommended height of 2.8m on the ceiling. Note that the lower the sensor is installed the smaller the detection range will be, subject to the parameters shown on the diagram.
- Avoid direct sunlight entering the sensor.
- Do not site within 1m of forced air heating or ventilation.
- Do not site within 1m of any lighting.
- Do not fix to a vibrating surface.
- Wire the product using the connector using the diagram on the front page.
- Mount using one of the two options above.
- To switch from more than one position simply wire two or more units in parallel.
- For lux enabled products, set the LUV level to maximum and the time to minimum.
- Power the unit up - the load should come on immediately.
- Vacate the room or remain very still and wait for the load to switch off (should take no more than 2 minutes).
- Check that the load switches on when movement is detected.
- To set the final LUX level wait until the level of natural daylight is just enough that lighting is required. Starting with the LUX control turned fully clockwise (at minimum), very slowly turn the control anti-clockwise until the lights come on. Note that when the LUX control is at maximum, the lights will always come on with occupancy.
- Set the time required.

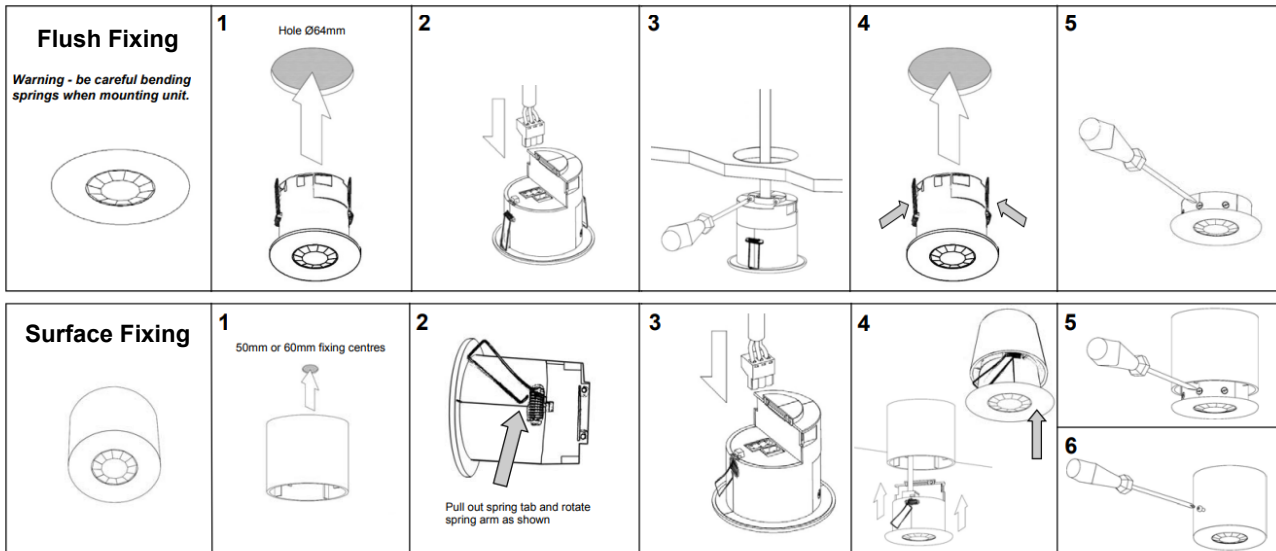
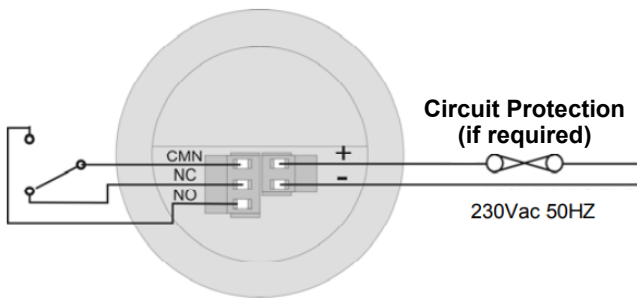
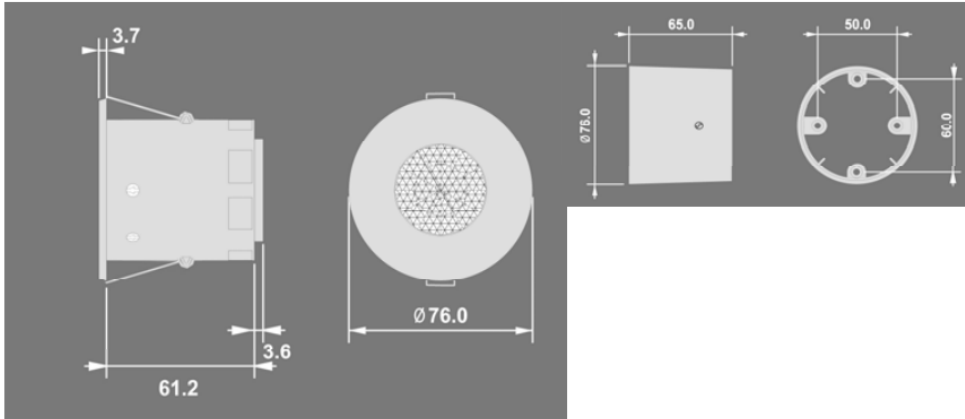
EC Products Limited

EC House, Amberley Way, Hounslow,
Middlesex. TW4 6BH. United Kingdom
Tel:+44 (0)20 8569 4100 Fax: +44 (0)20 8569 4111



Ceiling Occupancy Detector 230 Volt VFC EBDSPIR-VFC

Dimensions (mm):



EC Products Limited

EC House, Amberley Way, Hounslow,
Middlesex. TW4 6BH. United Kingdom
Tel: +44 (0)20 8569 4100 Fax: +44 (0)20 8569 4111