



Air Flow Switch FL-SL1E

Description:

The FL-SL1E is a paddle switch intended to monitor air flow within a duct and provide a switched output on detection of either a specific air velocity or flow failure.

It is well-suited in air ducts, air conditioning and air handling systems.

Technical Specification:

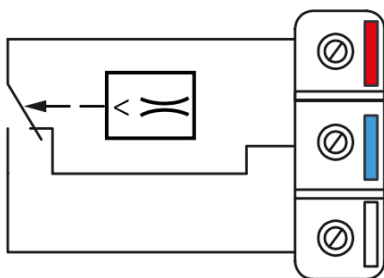
Contacts:	Dust-tight microswitch with SPDT contacts (N.C/N.O)
Switch Capacity:	15 (8) A, 24...250 Vac
Working:	-40...+85 °C 10...90% r.h. (without condensing)
Internal Duct Temp.:	-10...+85 °C
Body:	Brass
Paddles:	Stainless Steel AISI 301
Housing:	Base in ABS, transparent PC cover
Storage:	-40...+85 °C < 95% RH
Protection:	IP65, class I (only casing, external side duct)
Size:	265 x 140 x 100mm
Weight:	630g
Min. Cut-out Value:	1.0m/s
Min. Cut-in Value:	2.5m/s
Max. Cut-out Value:	8.0m/s
Max. Cut-in Value:	9.2m/s
Max. Air Temp.:	85°C



Note:

The flow switch may be installed in every position duly orientated on stream.
The units are calibrated at the minimum switch-off value. A higher value can be adjusted by turning the range screw clockwise.
Due to the risk of fracture at air speed higher than 5m/s, the paddle must be cut off on the marked side. When the paddle is cut off, the minimum cut-out value increases from 1m/s to 2,5m/s.
Straights zones should be provided for a length of 5 x diameter upstream and downstream the location of installation to avoid air swirl and paddle instability

Wiring Diagram:



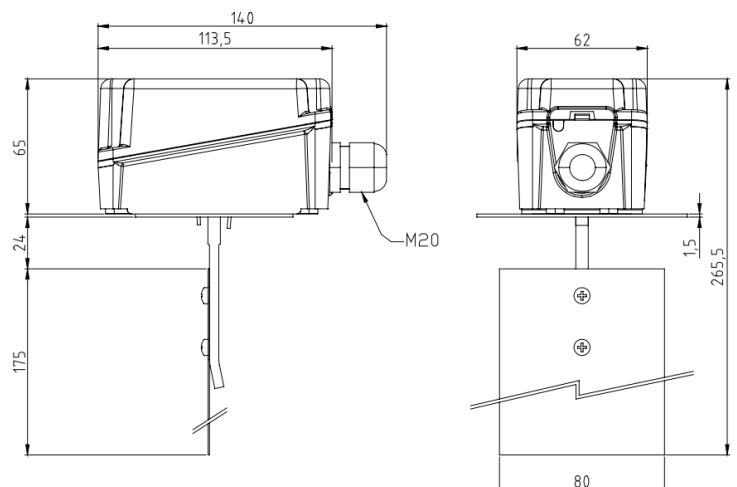
Connect to red and to white terminals (fig. 1). The contact red-white opens when the flow drops below the set level. When the flow is missing the contact red-blue closes and can be used as a signal or alarm contact.

Order Code:

FL-SL1E

Air Flow Switch

Dimensions:



EC Products Limited

EC House, Amberley Way, Hounslow,
Middlesex. TW4 6BH. United Kingdom
Tel:+44 (0)20 8569 4100 Fax: +44 (0)20 8569 4111