



# Inside Light Sensor Multi-Ranging Lux RHKF-\*\*\*

Page 1 of 2

## Description:

These light intensity sensors measure the light level and are used to control luminaries, lighting systems, Venetian blinds and canvas blinds, etc. They can be used to monitor lighting conditions at workplaces, in greenhouses, storage halls, workshops and corridors, in outdoor areas, in industrial halls, in offices, in residential and business facilities. Applications include daylight-dependent constant light control, as a light intensity or twilight sensor and to control sunshade equipment avoiding unnecessary heating-up of rooms.

## Technical Specification:

<b>Power Supply:</b>	24V AC ( $\pm 20\%$ ); 15...36V DC for U variant, 15...36V DC for I variant, depending on working resistance, residual ripple stabilised $\pm 0.3V$
<b>Working Resistance:</b>	$R_a \text{ (ohm)} = (U_b - 14V) /$ 0.02A for I variant
<b>Load Resistance:</b>	$R_L > 5k\Omega$ for U variant
<b>Power Consumption:</b>	$< 1W$ at 24V DC; $< 2VA$ at 24V DC
<b>Sensor:</b>	Light sensor with diffuser
<b>Measuring Ranges:</b>	Multi-range switching (via DIP switches) with 4 switchable measuring ranges 0...500 Lux / 1 kLux / 5 kLux / 20 kLux
<b>Output:</b>	4...20mA or 0-10V (2- or 3-wire connection)
<b>Measuring Error:</b>	$< 5\%$ of final value
<b>Ambient Temperature:</b>	0...+50°C
<b>Electrical Connection:</b>	0.14 – 1.5mm <sup>2</sup> , via screw terminals on circuit board
<b>Enclosure:</b>	Plastic, material ABS, colour pure white (similar to RAL 9010)
<b>Dimensions:</b>	85 x 85 x 27mm (Baldur 1)
<b>Installation:</b>	Wall mounting or on in-wall flush box, Ø55mm, base with 4-hole for mounting on vertically or horizontally installed in-wall flush boxes for cable entry from the back, with predetermined breaking point for on-wall cable entry from top / bottom in case of plain on-wall installation.
<b>Protection Class:</b>	III (according to EN 60730)
<b>Protection Type:</b>	IP30 (according to EN 60529)
<b>Standards:</b>	CE conformity, electromagnetic compatibility according to EN 61326, EMC Directive 2014 / 30 / EU

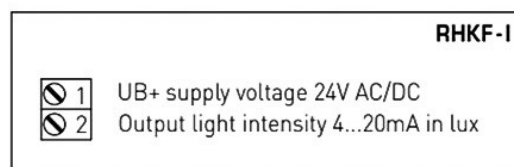
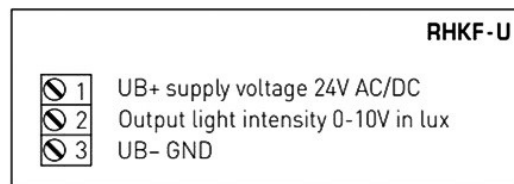
## Order Codes:

<b>RHKF-U</b>	Inside Light Sensor Multi-Ranging Lux 0-10V
<b>RHKF-I</b>	Inside Light Sensor Multi-Ranging Lux 4...20mA

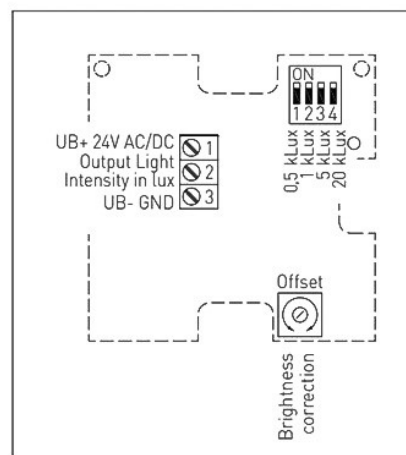


Measuring ranges (selectable)	DIP 1	DIP 2	DIP 3	DIP 4
0...500 Lux	<b>ON</b>	OFF	OFF	OFF
0... 1 kLux	OFF	<b>ON</b>	OFF	OFF
0... 5 kLux	OFF	OFF	<b>ON</b>	OFF
0... 20 kLux	OFF	OFF	OFF	<b>ON</b>

## Connecting Diagrams:



## Schematic Diagram:



## EC Products Limited

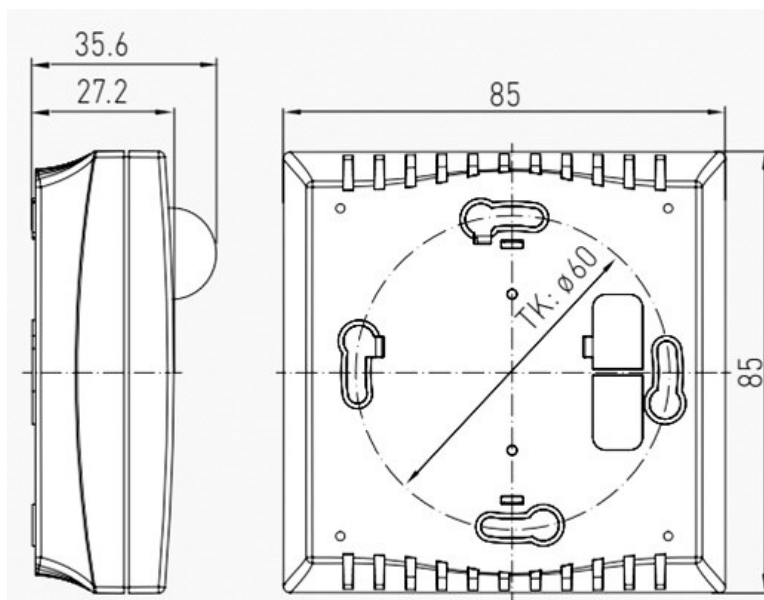
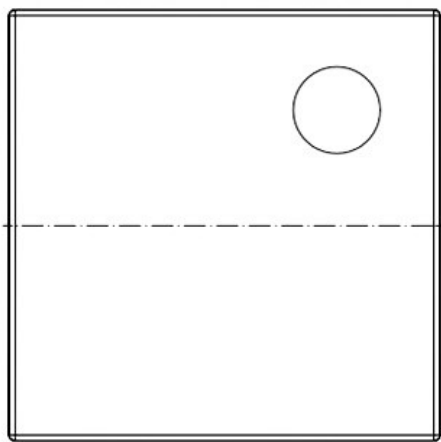
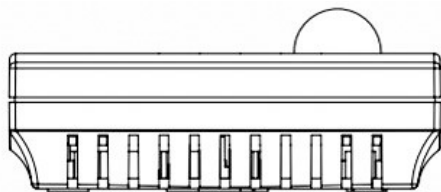
EC House, Amberley Way, Hounslow,  
Middlesex. TW4 6BH. United Kingdom  
Tel: +44 (0)20 8569 4100 Fax: +44 (0)20 8569 4111



## Inside Light Sensor Multi-Ranging Lux RHKF-\*\*\*

Page 2 of 2

### Dimensions:



### EC Products Limited

EC House, Amberley Way, Hounslow,  
Middlesex. TW4 6BH. United Kingdom  
Tel: +44 (0)20 8569 4100 Fax: +44 (0)20 8569 4111