



## 3 Port Rotary Valves VR-F\*\*

### Description:

VR-F 3-way valves with flange connection PN6, suitable for mixing or diverting operation up to 6 bar. The valves are made of high-performing cast iron allowing use in heating and cooling installations. The VR-F series are available in DN20-150 and comes with a PN6 flange to suit PN6 flange pipe dimensions.



### Features:

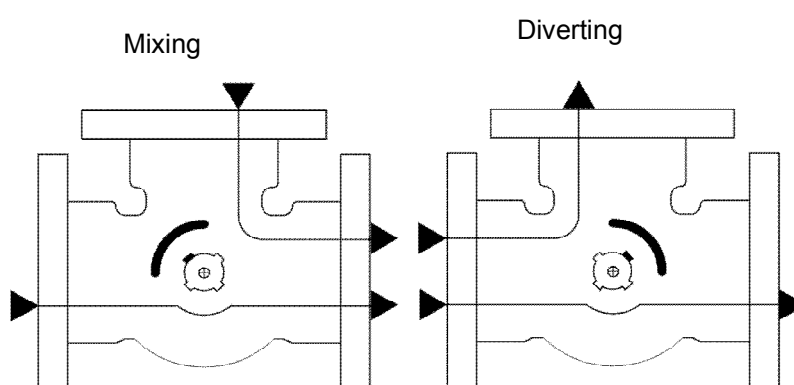
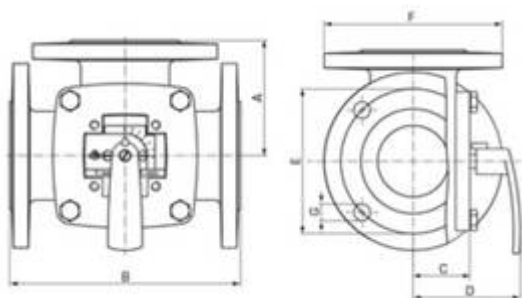
- Superb regulation for mixing or diverting.
- Wide range of sizes up to DN150
- Compact, flexible and easy to install.
- Long lasting and high durability.

### Technical Specification:

<b>Pressure Class:</b>	PN6
<b>Differential Pressure drop:</b>	DN65-150, max 30kPa
<b>Connections:</b>	Flange acc. To EN 1092-2
<b>Media temperature:</b>	max. +110 °C min.: -10 °C
<b>Leak rate in % of flow, max:</b>	1.5%
<b>Rangeability Kv/Kv min:</b>	100
<b>Material:</b>	Valve body: Cast iron, EN-JL 1030 Slide DN 65-150: Brass, CW 614N and Stainless steel Bushing DN 65-150: Brass DZR, CW 602N Cover plate DN 65-150: Cast iron O-rings: EPDM

### Dimensions:

Part No.	DN	Kvs*	A mm	B mm	C mm	D mm	E mm	F mm	G mm	Wgt kg
VR-F65	65	90	100	200	52	95	130	160	4x 15	10
VR-F80	80	150	120	240	63	106	150	190	4x 18	16.2
VR-F100	100	225	132	265	73	116	170	210	4x 18	21
VR-F125	125	280	150	300	80	123	200	240	8x 18	27
VR-F150	150	400	175	350	88	130	225	265	8x 18	37



### Order Codes:

VR-F65	65mm 3 port screwed rotary shoe valve
VR-F80	80mm 3 port screwed rotary shoe valve
VR-F100	100mm 3 port screwed rotary shoe valve
VR-F125	125mm 3 port screwed rotary shoe valve
VR-F150	150mm 3 port screwed rotary shoe valve

The flat-sided spindle top points towards the sleeve position

### EC Products Limited

EC House, Amberley Way, Hounslow,  
Middlesex. TW4 6BH. United Kingdom  
Tel:+44 (0)20 8569 4100 Fax: +44 (0)20 8569 4111