

# 16mm Panel Indicators AD16DS

## Description

A range of 16mm indicator lamps used in electrical circuits in a variety of voltages. They are primarily used for indication and alarm signals and conform to IEC60947-5-1. The AD16DS utilize LEDs for long life and very low energy consumption and have concealed terminals.

## Features

- Choice of colours
- Choice of voltages
- LED for long life



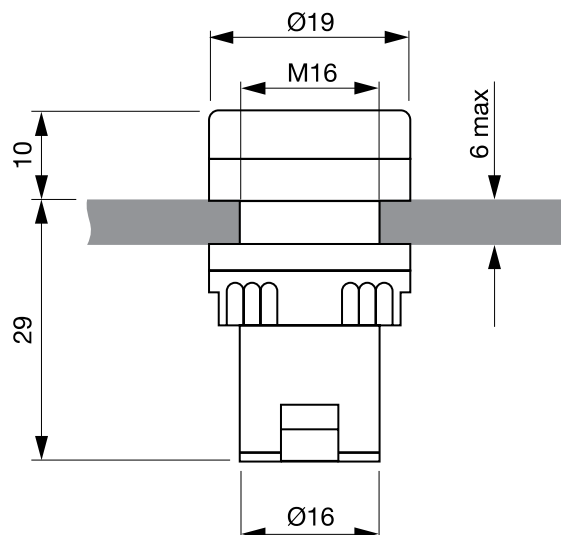
## Technical Specification

Operating Temperature:	-5...+40°
Operating Humidity:	45...85% RH
Pollution Degree:	3
Installation Degree:	III
Degree of Protection:	IP65
Rated Operating Current:	≤ 80mA
Electrical Life:	≥30000 hours
Brightness:	≥60
Rated Operating Voltage:	See Order Codes
Base Colour:	See Order Codes

## Order Codes

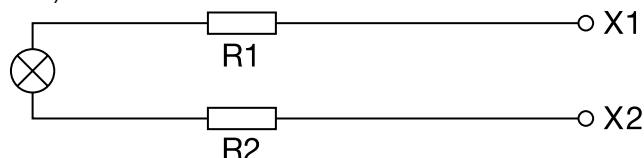
AD16DS-R24	16mm panel indicator colour red 24Vac/dc
AD16DS-G24	16mm panel indicator colour green 24Vac/dc
AD16DS-B24	16mm panel indicator colour blue 24Vac/dc
AD16DS-Y24	16mm panel indicator colour yellow 24Vac/dc
AD16DS-W24	16mm panel indicator colour white 24Vac/dc
AD16DS-R110	16mm panel indicator colour red 110Vac
AD16DS-G110	16mm panel indicator colour green 110Vac
AD16DS-B110	16mm panel indicator colour blue 110Vac
AD16DS-Y110	16mm panel indicator colour yellow 110Vac
AD16DS-W110	16mm panel indicator colour white 110Vac
AD16DS-R220	16mm panel indicator colour red 230Vac
AD16DS-G220	16mm panel indicator colour green 230Vac
AD16DS-B220	16mm panel indicator colour blue 230Vac
AD16DS-Y220	16mm panel indicator colour yellow 230Vac
AD16DS-W220	16mm panel indicator colour white 230Vac

## Dimensions

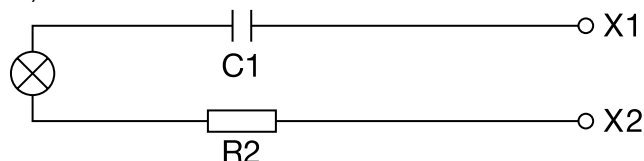


## Circuits

24Vac/dc



110/220Vac



### E.C. Products Limited - Head Office

EC House, Amberley Way, Hounslow  
Middlesex, TW4 6BH, United Kingdom

Tel: +44 (0)20 8569 4100 Fax: +44 (0)20 8569 4111