



230Vac to 24Vac Control Panel Transformers PS-**

Description:

The PS 230Vac to 24Vac Transformers are available in a choice of power ratings and are suitable for a wide range of power supply applications requiring a 24 Vac supply.



Features:

- ◆ Male Spade For earth Connection
- ◆ Fully Lacquered for protection

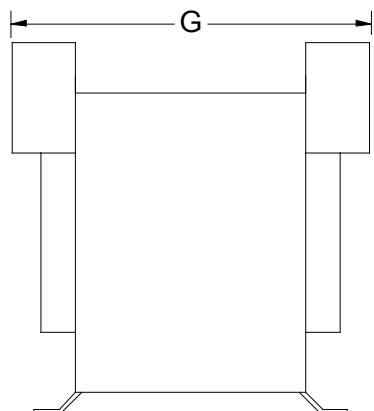
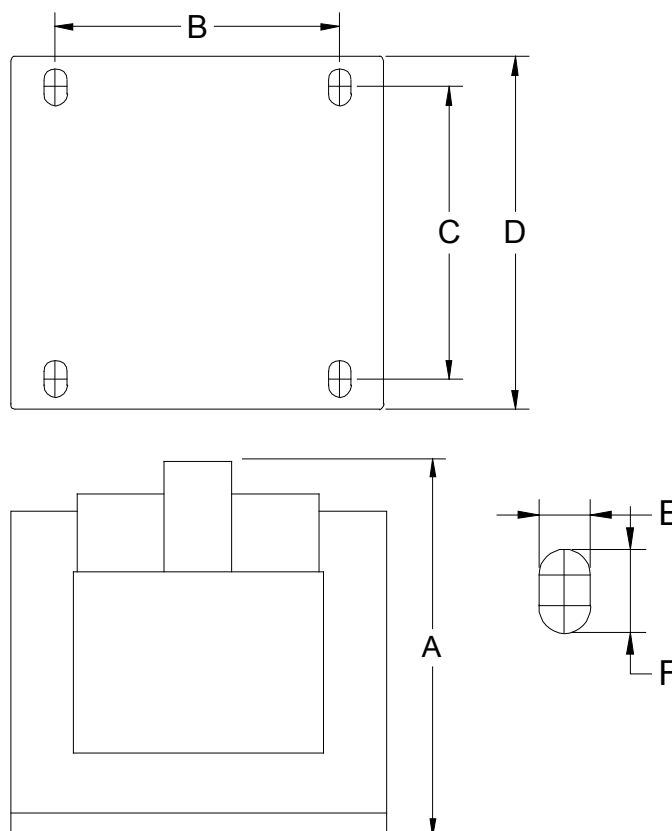
Technical Specification:

Input Voltage: 230Vac \pm 5%
Output Voltage: 24Vac \pm 10%
Termination: Rising Clamp for 0.5 to 2.5mm² Cable.
Ambient: -10°C to + 50°C
Dimensions: See Table below

Order Codes:

PS-25 230Vac Transformer Primary 25VA
PS-50 230Vac Transformer Primary 50A
PS-100 230Vac Transformer Primary 100VA
PS-160 230Vac Transformer Primary 160VA
PS-250 230Vac Transformer Primary 250VA

Model	A	B	C	D	E	F	G	Weight
PS-25	77	50	44	55	5	8	68	737g
PS-50	77	50	54	66	5	8	78	1049g
PS-100	91	64	63	76	5	8	88	2055g
PS-160	102	84	72	88	6	9	90	2930g
PS-250								



EC Products Limited

EC House, Amberley Way, Hounslow,
 Middlesex. TW4 6BH. United Kingdom
 Tel: +44 (0)20 8569 4100 Fax: +44 (0)20 8569 4111