

## Description

XB2 series pushbuttons are used in the control of electrical circuits. A choice of panel mounting bezel and colours is available as well as different combinations of contact block. Illuminated versions can also be supplied.

## Features

- Choice of colours
- Choice of bezel



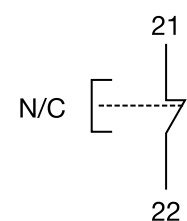
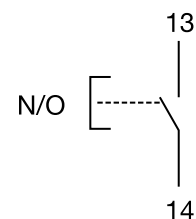
## Technical Specification

**Rated Insulation Voltage:** 660V  
**Operating Temperature:** -5...+40°C  
**Operating Humidity:** 45...85% RH  
**Contact Rating:** 10(6)A @ 400V  
**Electrical Life:** 50 x 10<sup>5</sup> operations  
**Protection:** IP40

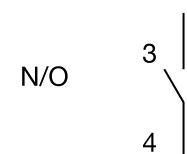
## Circuits

### Order Codes

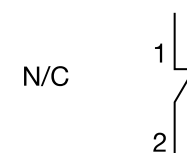
<b>XB2-BA11</b>	Normally open pushbutton white - metal bezel
<b>XB2-BA21</b>	Normally open pushbutton black - metal bezel
<b>XB2-BA31</b>	Normally open pushbutton green - metal bezel
<b>XB2-BA42</b>	Normally closed pushbutton red - metal bezel
<b>XB2-BA51</b>	Normally open pushbutton yellow - metal bezel
<b>XB2-BA61</b>	Normally open pushbutton blue - metal bezel
<b>XB2-EA11</b>	Normally open pushbutton white - plastic bezel
<b>XB2-EA21</b>	Normally open pushbutton black - plastic bezel
<b>XB2-EA31</b>	Normally open pushbutton green - plastic bezel
<b>XB2-EA42</b>	Normally closed pushbutton red - plastic bezel
<b>XB2-EA51</b>	Normally open pushbutton yellow - plastic bezel
<b>XB2-EA61</b>	Normally open pushbutton blue - plastic bezel
<b>ZB2-BE101</b>	Normally Open Contact Block
<b>ZB2-BE102</b>	Normally Closed Contact Block



ZB2-BE10



ZB2-BE102



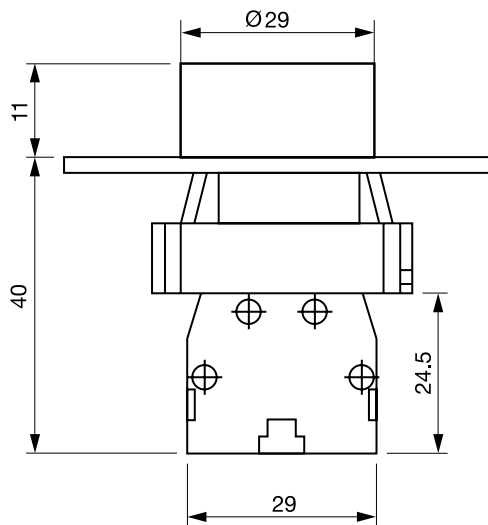
### E.C. Products Limited - Head Office

EC House, Amberley Way, Hounslow  
Middlesex, TW4 6BH, United Kingdom

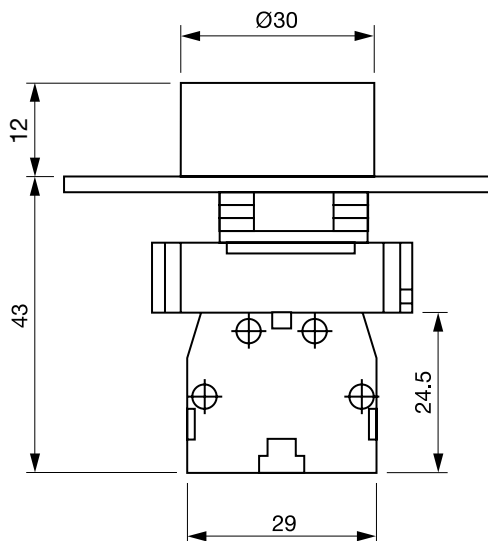
Tel: +44 (0)20 8569 4100 Fax: +44 (0)20 8569 4111

## Dimensions

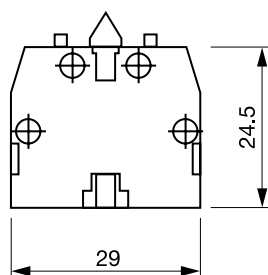
### XB2-BAx



### XB2-EAx



### ZB2-BE



#### E.C. Products Limited - Head Office

EC House, Amberley Way, Hounslow  
Middlesex, TW4 6BH, United Kingdom

Tel: +44 (0)20 8569 4100 Fax: +44 (0)20 8569 4111